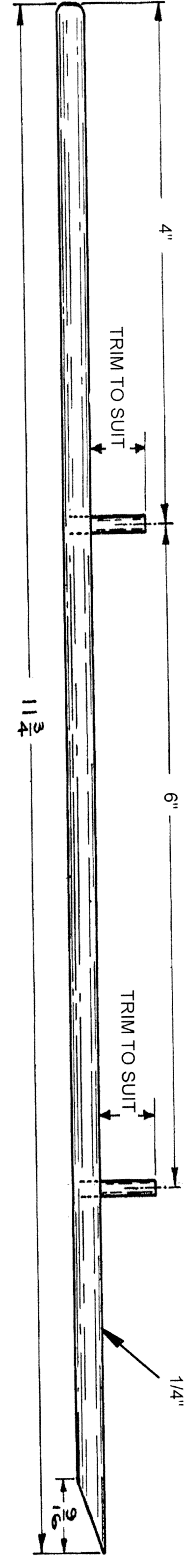
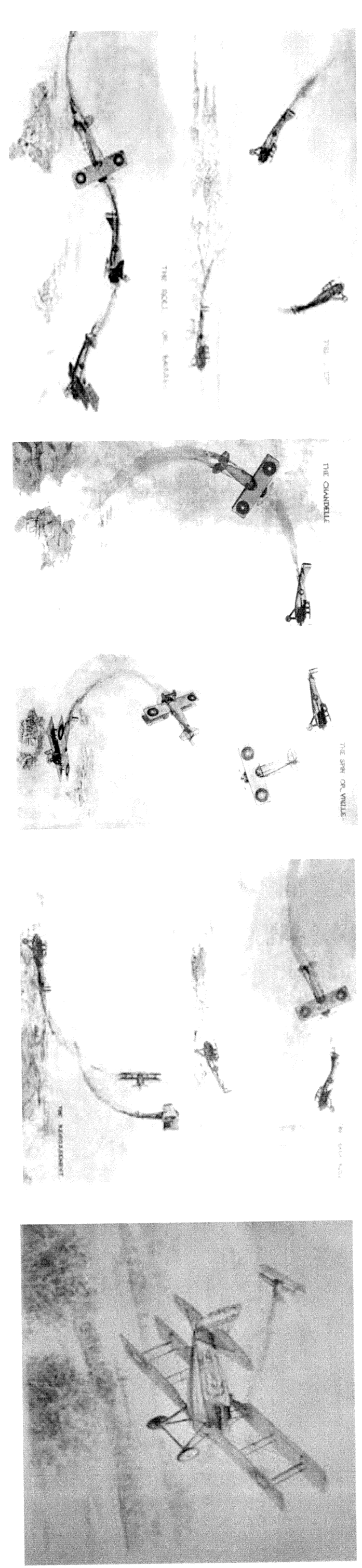
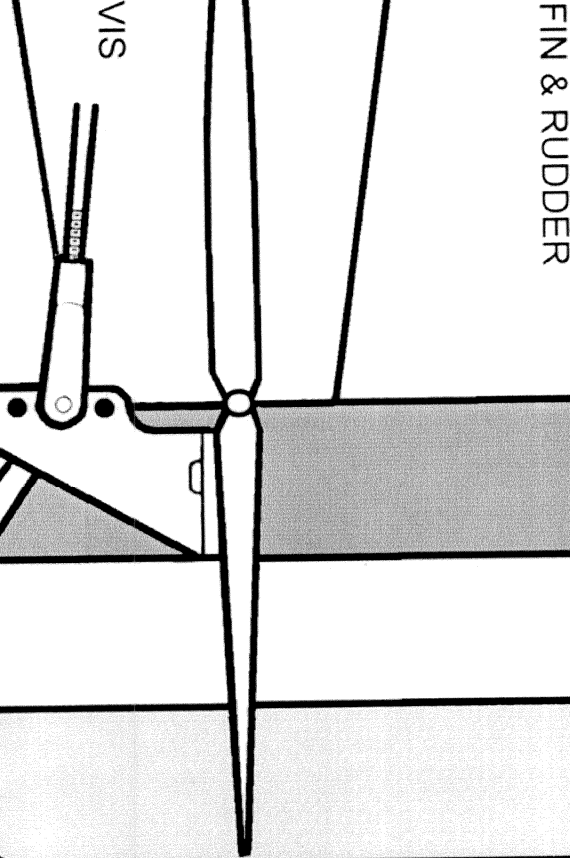
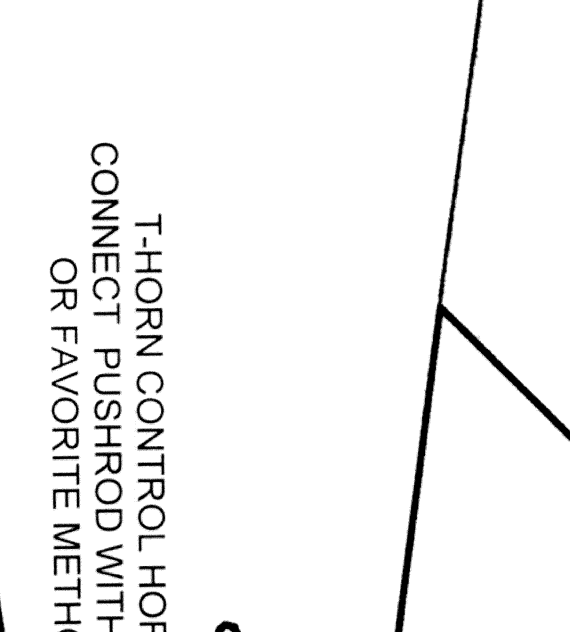
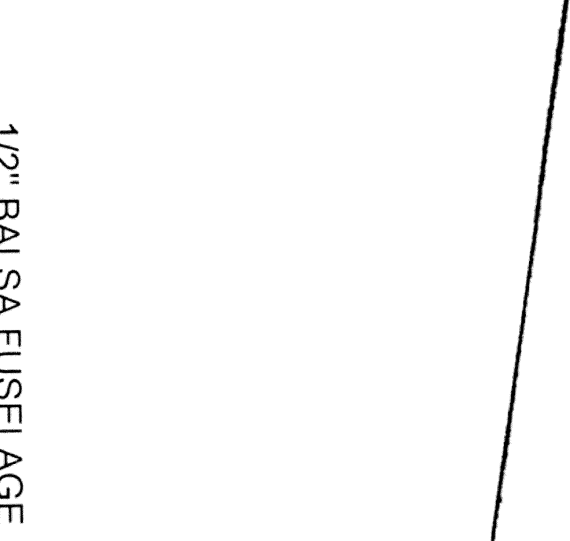
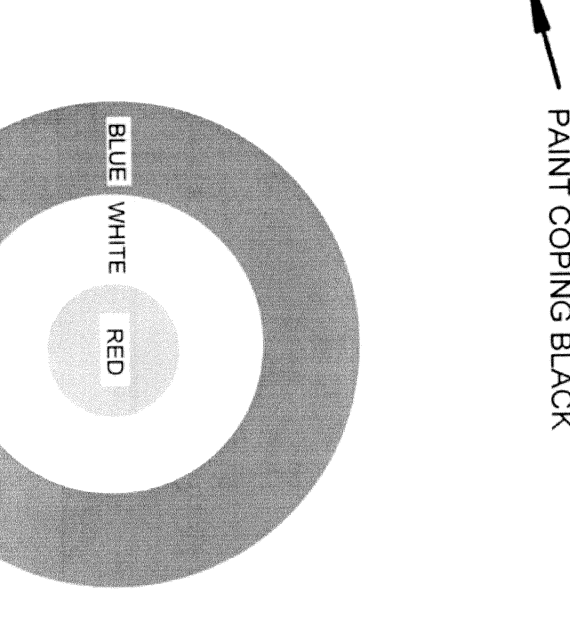
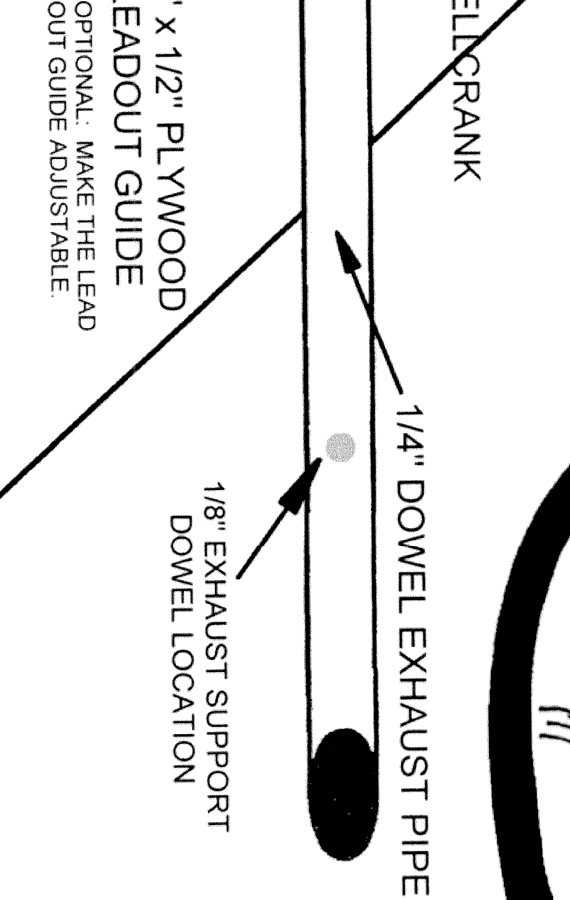
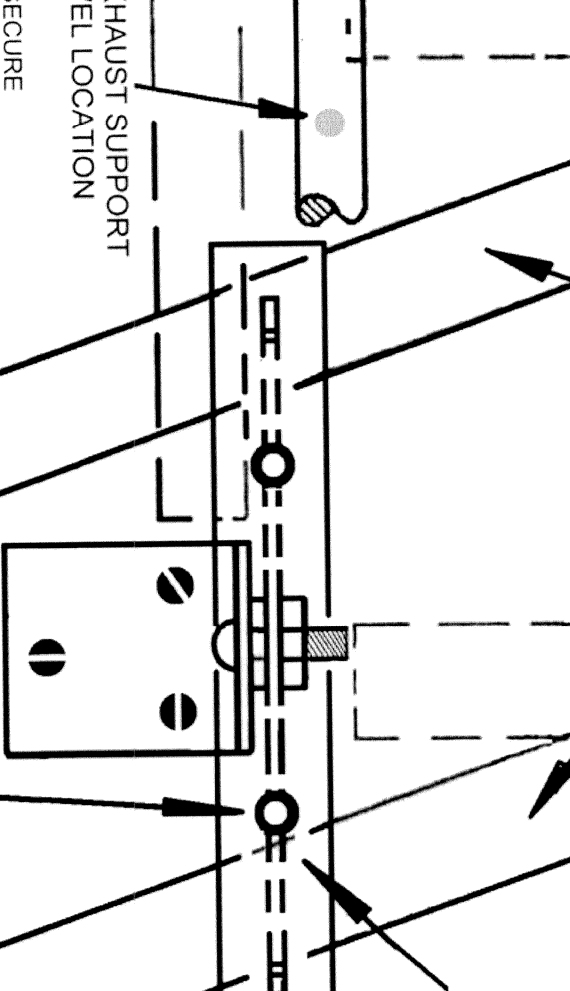
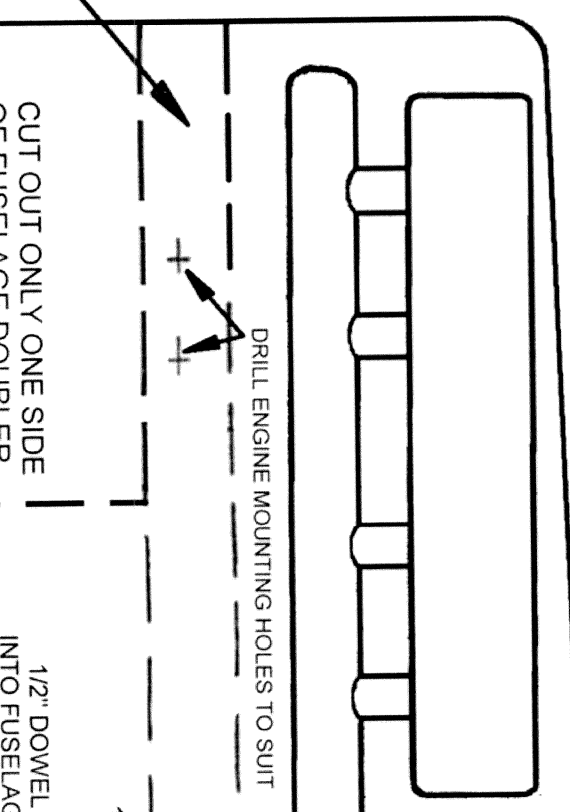
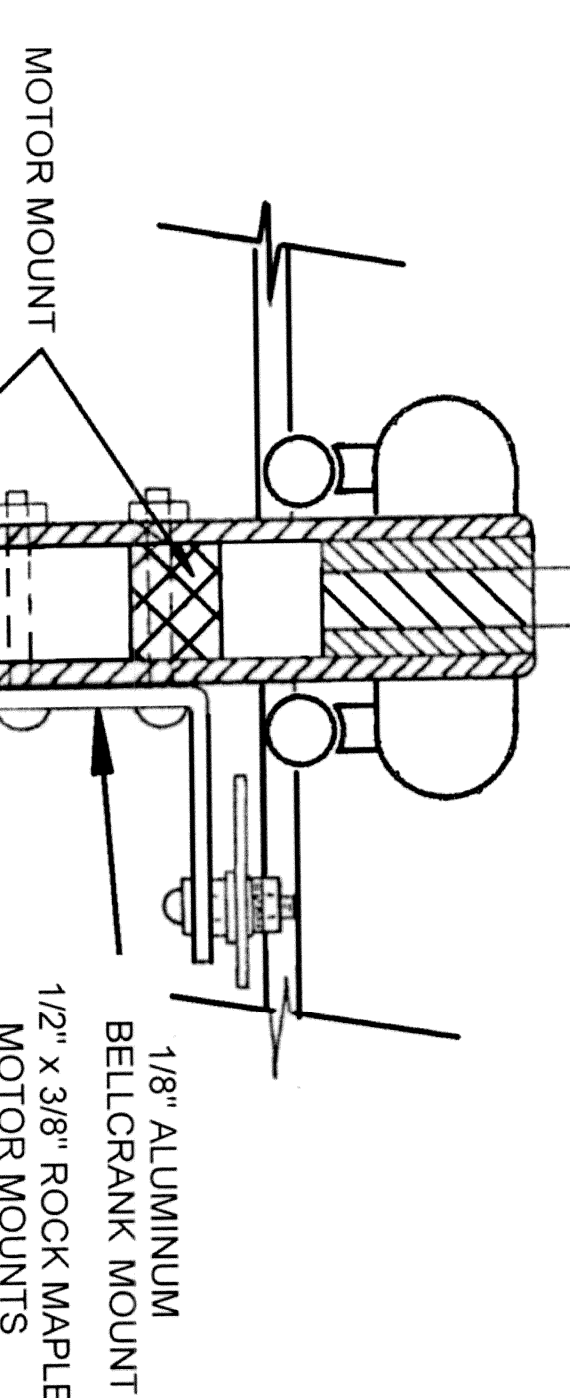
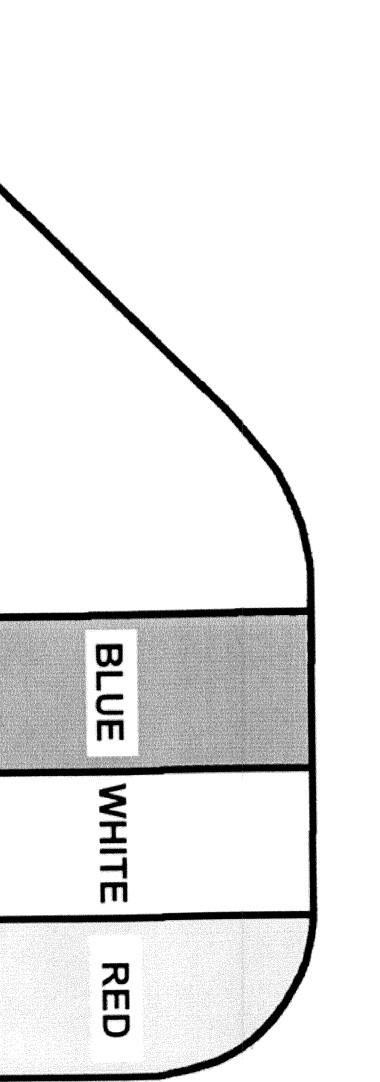
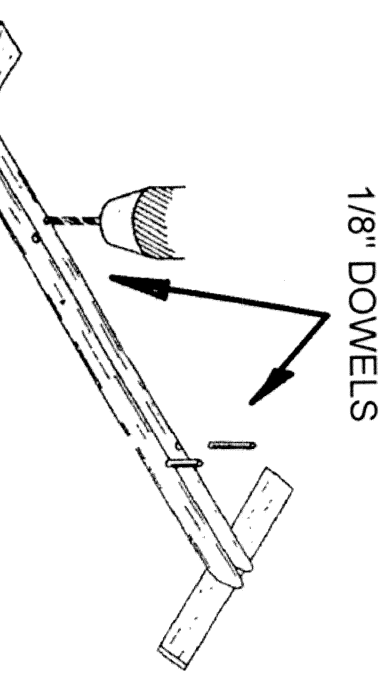
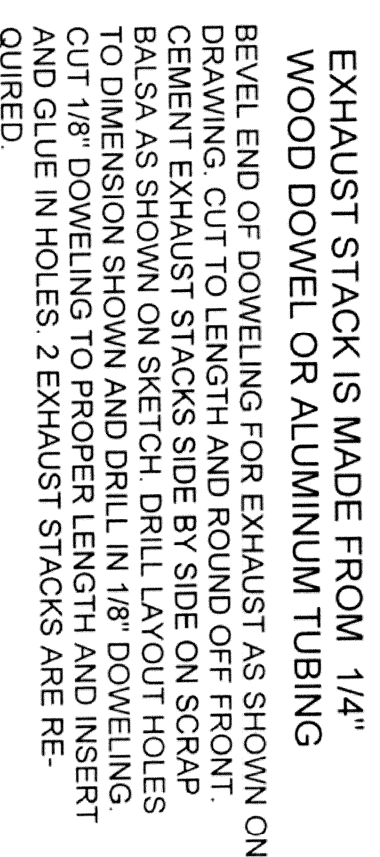
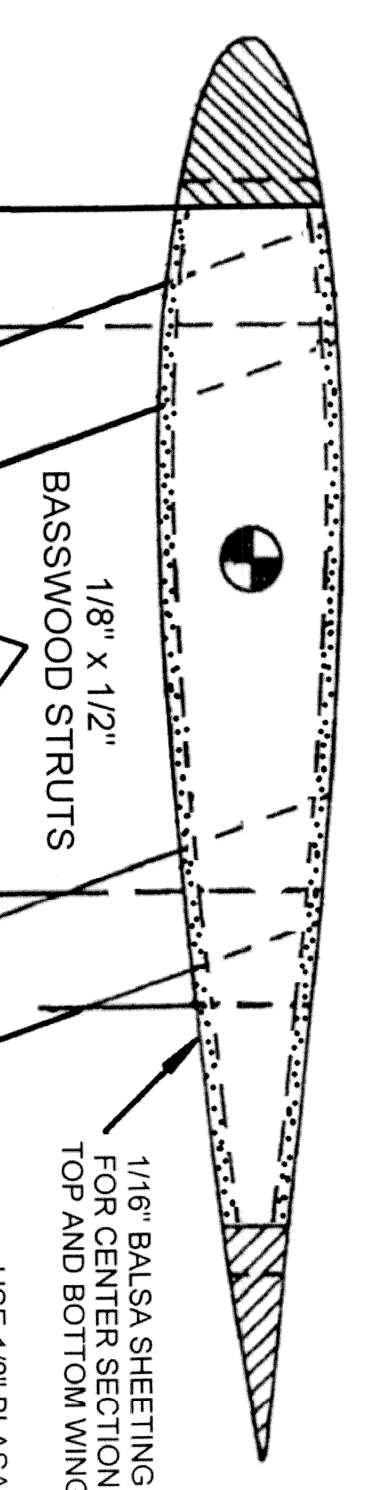
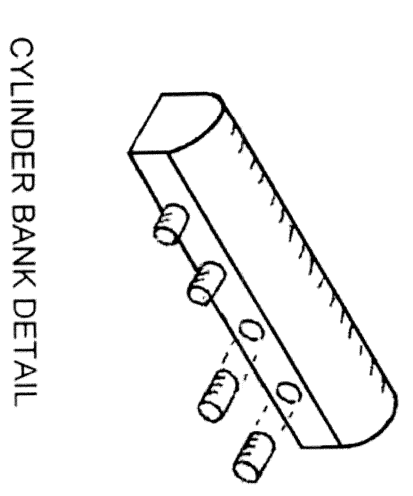
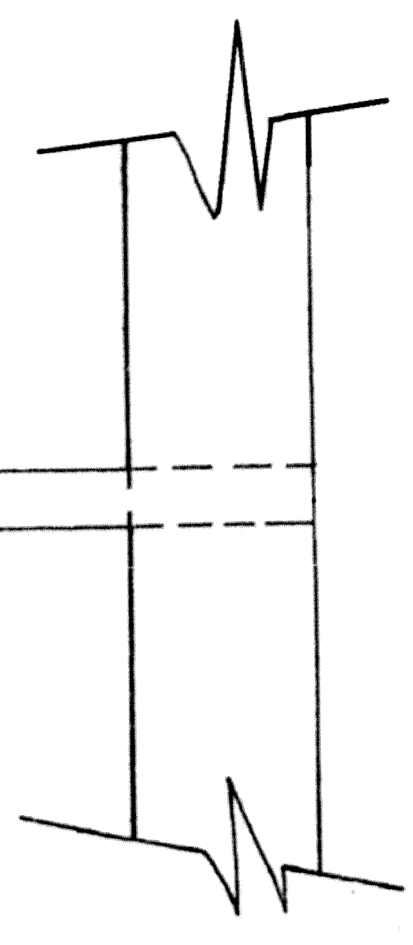


MAKE PILOT SILHOUTTE FROM PHOTOGRAPH. PAINT AS YOU DESIRE.

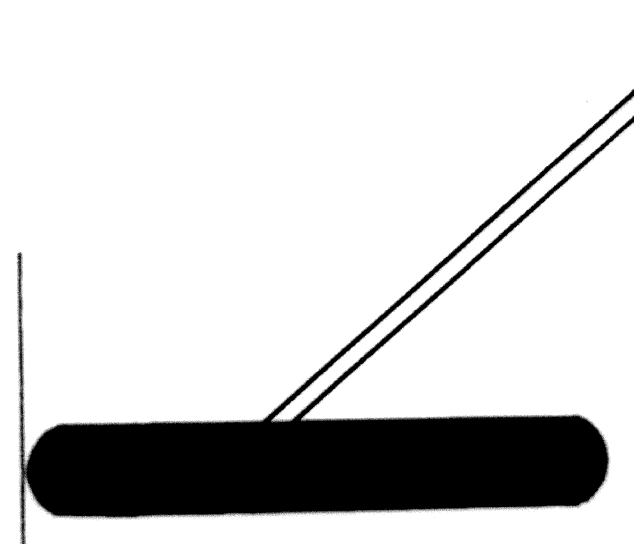


MAKE 18 RIBS PER WING

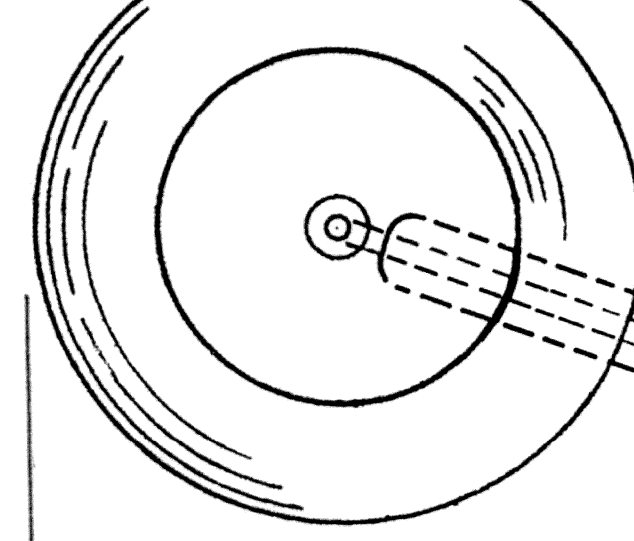
6 CENTER RIBS BOTH WINGS



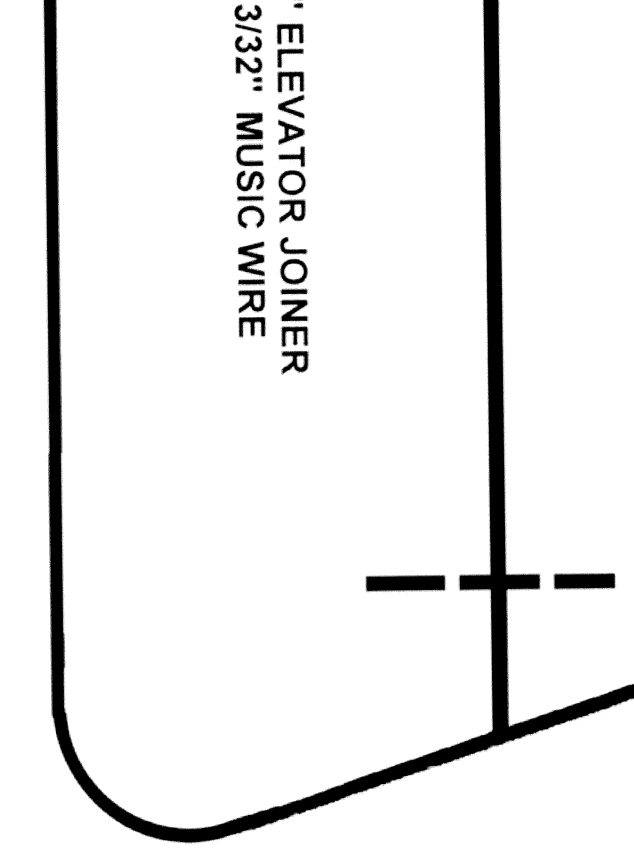
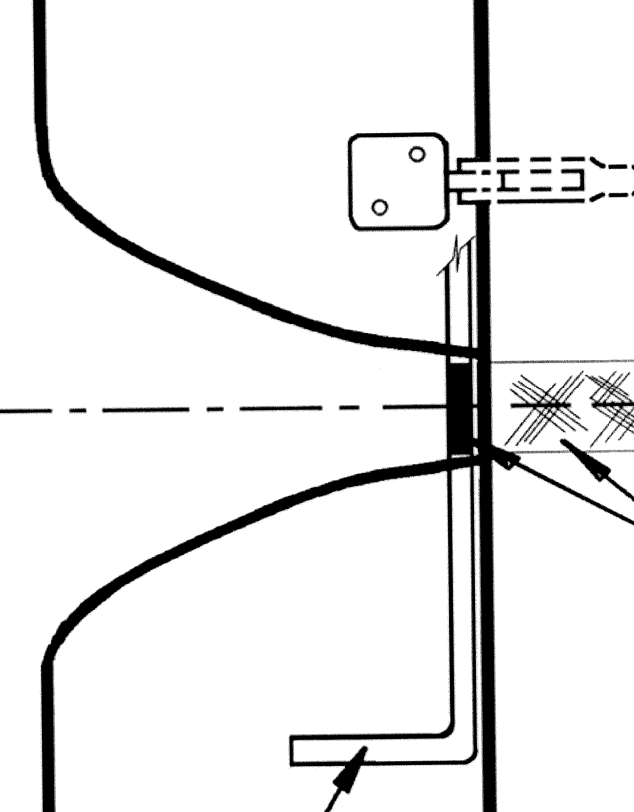
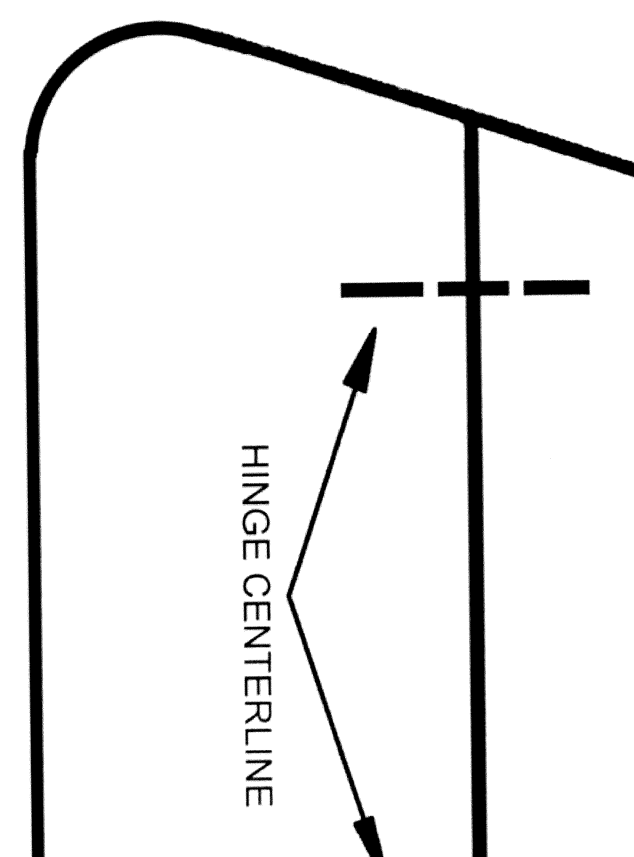
**SE-5a**  
CIL SLOW COMBAT  
FOR 19 TO 35 ENGINE



2 3/4" OLD TIMER WHEELS  
(WILLIAMS BROS.)



ATTACH TO LANDING GEAR WITH GLASS CLOTH AND EPOXY



THIS AIRCRAFT WAS DESIGNED, CONSTRUCTED TOGETHER, AND ASSEMBLED FROM THIS THAT FOR THE OTHER BY, George Albo

This aircraft is meant to complement the Sig Stunt 7 and the Sig Pucker Owl. BEWARE RED BARON!

